

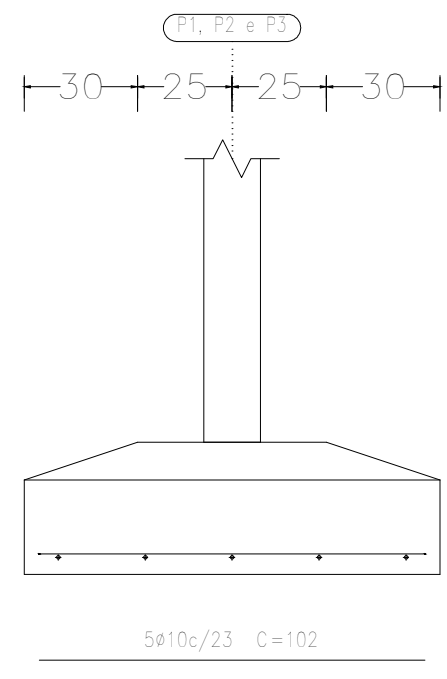
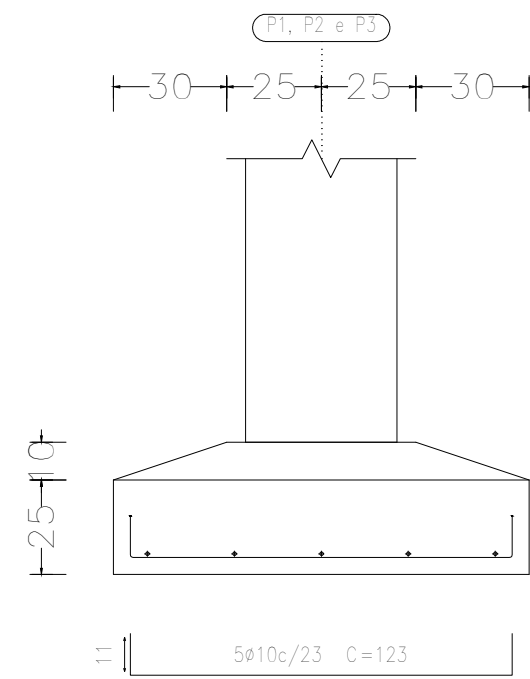
QUADRO DE ELEMENTOS DE FUNDAÇÃO					
Referências	Dimensões (cm)	Altura (cm)	Armadura def. X	Armadura inf. Y	Armadura sup. X
P1, P2 e P3	110x110	35 / 25	5ø10c/23	5ø10c/23	
P4	100x75	35 / 25	3ø10c/28	4ø10c/27	
P5 e P12	65x130	30 / 20	5ø10c/28	3ø10c/27	
P6, P8, P9, P13, P14, P15, P16, P20, P27, P28 e P29	110x110	35 / 25	5ø10c/23	5ø10c/23	
P7, P18 e P19	110x110	35 / 25	5ø10c/23	5ø10c/23	
P10	125x100	30 / 20	4ø10c/27	3ø10c/28	
P11	100x200	35 / 25	6ø12.5c/25	6ø12.5c/25	6ø12.5c/25
P17	35x180	30 / 20	10ø10c/18	4ø12.5c/27	10ø10c/18
P26	210x120	65 / 35	10ø12.5c/22	10ø12.5c/22	10ø12.5c/22
P27	75x75	35 / 40	5ø10c/16	5ø10c/16	
P28	230x115	65 / 35	8ø10c/14	11ø12.5c/21	8ø10c/14
P29	230x130	75 / 35	12ø12.5c/19	12ø12.5c/19	12ø12.5c/19
P30	190x95	30 / 20	4ø12.5c/27	7ø12.5c/28	7ø12.5c/27
P31	220x110	60 / 35	5ø12.5c/24	10ø12.5c/23	5ø12.5c/24
P32	200x200	60 / 35	5ø12.5c/22	5ø12.5c/22	5ø12.5c/22
P33	85x85	35 / 40	5ø10c/16	5ø10c/16	5ø10c/16
P20-P23	215x100	30 / 20	4ø10c/27	3ø10c/25	4ø10c/27

Tabela de vigas de equilíbrio	
VC.T-1.1	
Arm. sup.: 4ø16 CA-50	
Arm. inf.: 3ø12.5 CA-50	
Arm. pele: 1x2ø12.5 CA-50	
Estribos: 1xø8 CA-50c/20	

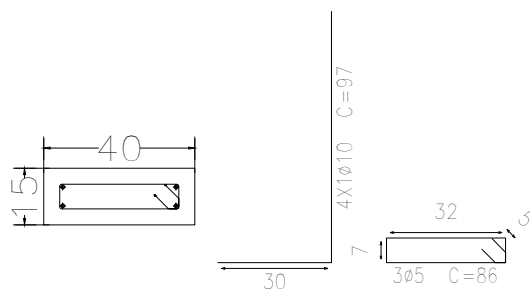
Tabela de vigas de travamento	
C.3	
Arm. sup.: 2ø20 CA-50	
Arm. inf.: 2ø20 CA-50	
Estribos: 1xø8 CA-50c/30	

Quadro de armaduras			
Referências	Armadura Central	Armadura Esq. X	Armadura Esq. Y
P1, P2, P3, P6, P8, P9, P14, P15, P16, P20, P27, P28 e P29	4ø10 (30+24+38)		
P4, P6, P10, P12, P22 e P23	4ø10 (30+24+38)		
P8, P7, P11 e P19	4ø10 (30+24+38)	2ø10 (30+24+38)	
P11	4ø10 (30+48+38)		
P17 e P30	4ø10 (30+48+38)		
P18	4ø10 (30+24+38)	4ø10 (30+24+38)	
P26, P28 e P32	4ø12 (25+35+38)		
P27 e P33	4ø10 (30+44+38)		
P33	4ø10 (30+44+38)	5ø10 (30+48+38)	
P31	4ø10 (30+53+38)		

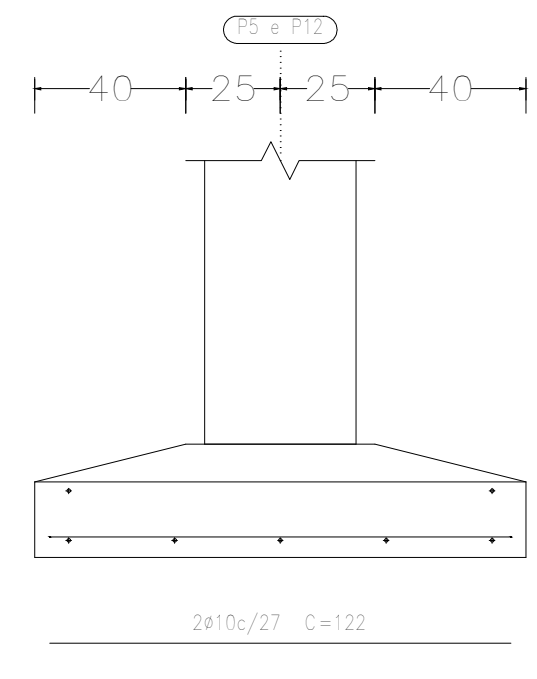
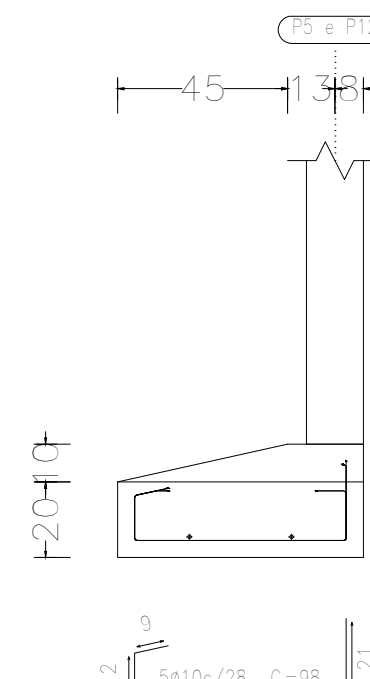
P1, P2 e P3



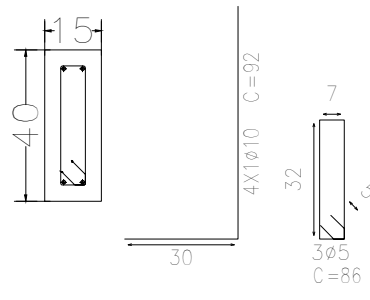
P1, P2 e P3



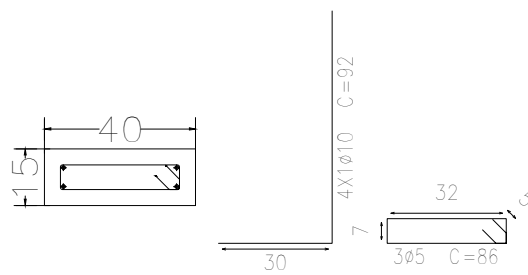
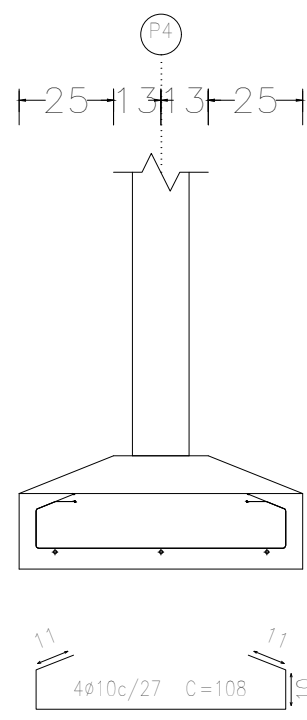
P5 e P12



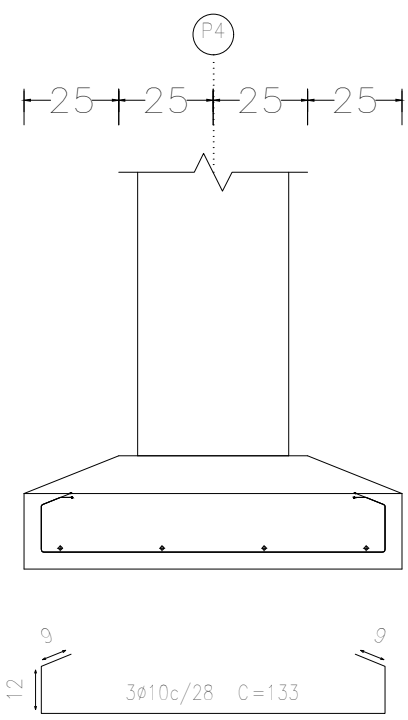
P5 e P12



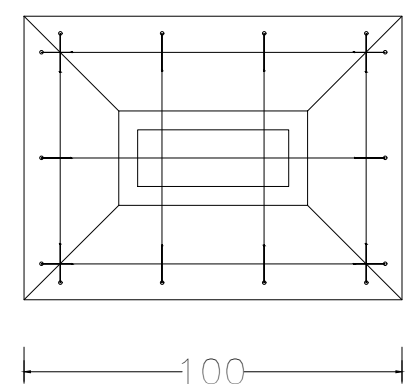
P4



P4



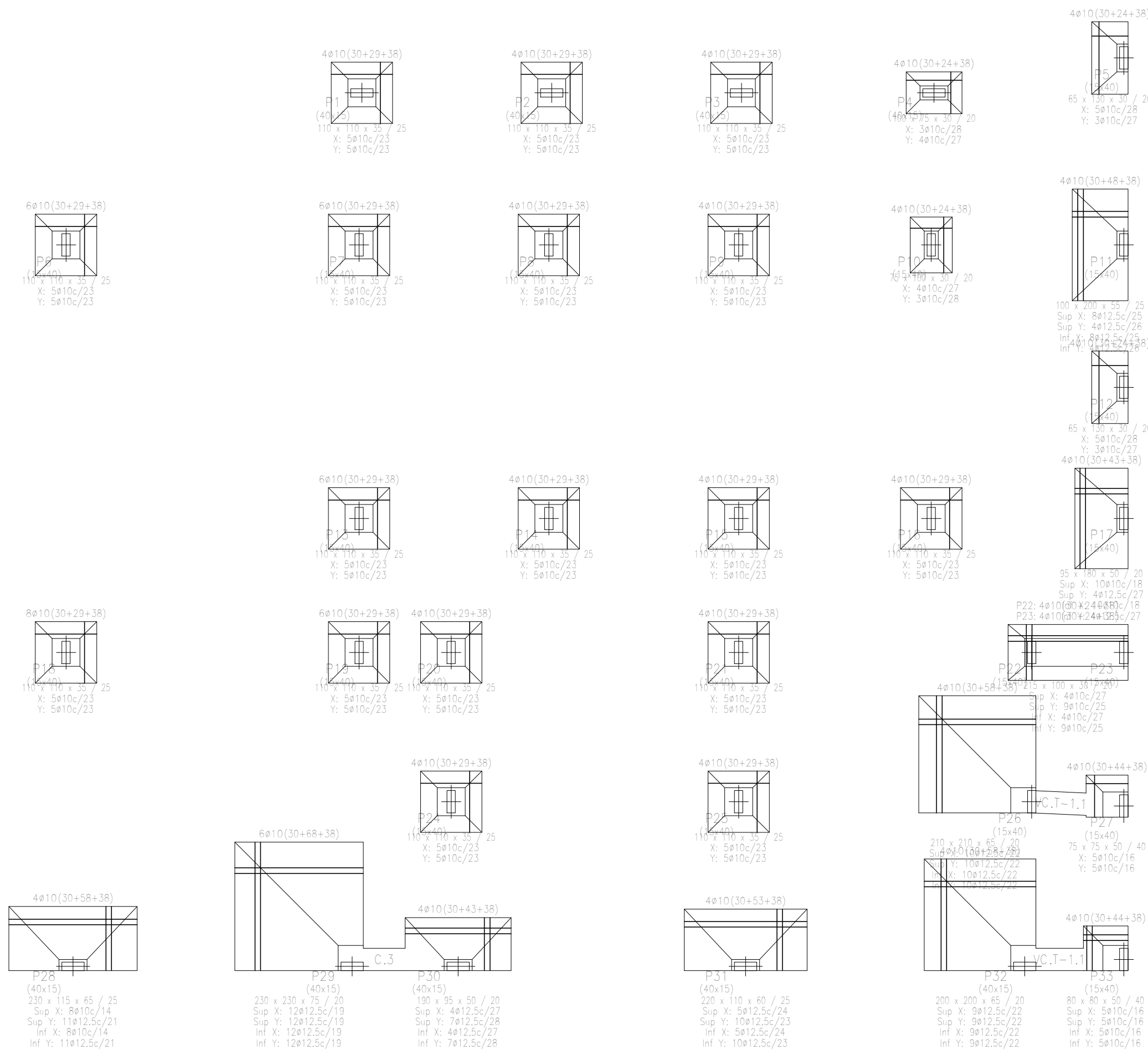
P4



Fundação
Piso
Escala: 1:75

Armaduras
np x (a+bt+cc)
Escala: 1:75

Fundação
Fundação
Concreto: C25, em geral
Aços em fundações: CA-50 e CA-60
Escala: 1:75



Complexo Municipal de Saúde		Data:	25/10/2023
Local:		Número de desenho:	
Avenida Júlia Campos, Quadra 03			
Promotor:			
Complexo Municipal de Saúde		Escala:	Indicadas
Eduardo Rompanelli Tosetto Engenheiro Civil Número do CREA: 1220503037		Data:	25/10/2023